

Memorialisation



We're with you
every step of
the way...



Choosing a memorial

Contents

Ashes caskets and scatterpods 4

Memorial masonry 7

Eco friendly outdoor memorials
and memorial seeds 19

Keepsake memory pins and bears 23

Jewellery 27

Keeping the memory alive

At Lincolnshire Co-op, we understand how important it is to remember your loved one in the right way for you. You should take time to consider the various options available to you and, of course, our professional team will be there to guide you every step of the way.

Ashes caskets and scatterpods (pages 4-6)

We provide a range of ashes caskets and scatterpods which are suitable for burial, scattering or keeping at home.

Memorial masonry (pages 7-18)

Our memorial masons provide first class traditional and modern memorials. Using both state-of-the art technology and traditional hand carving skills, they can create memorials which are unique and personal to your loved one. We can also carry out additional inscriptions and renovations.

Eco-friendly outdoor memorials and memorial seeds (pages 19-22)

We offer a range of memorials, for outdoors, some of which are eco-friendly.

Keepsake memory pins and bears (pages 23-26)

From beautiful memorial pins to locally hand made memory bears, we have a range of keepsakes to help keep a loved one close or to give a thoughtful gift to a family member or friend.

Jewellery (Pages 27-30)

We offer a range of fingerprint and ashes jewellery. Each piece is professionally made with care and attention to each and every detail.



Ashes containers

Traditional range

These traditional caskets are suitable for interment in most cemeteries and churchyards. They are fitted with an engraved name plate.

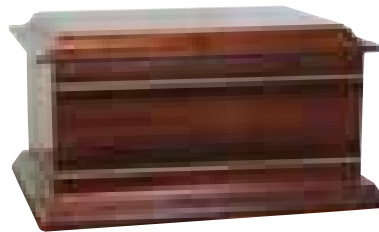
Oak



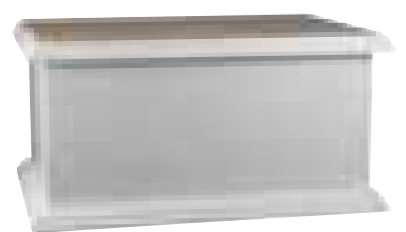
Mahogany



Oxford



Cambridge



Eco-Friendly Range

Musgrove willow caskets are sustainable, environmentally friendly and beautifully handcrafted using the skills passed down through four generations, sorted and graded by hand.



Scatterpods

Many families wish to scatter the ashes of their loved ones in a place of sentimental importance.

Our range of scatterpods is designed to ensure the process of scattering the ashes can be done with ease and dignity.

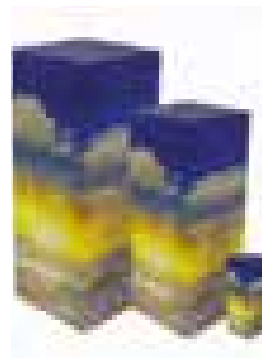
They're also an environmentally friendly alternative to plastic containers, as they're made from biodegradable card.



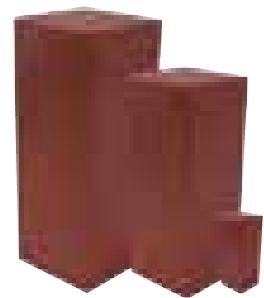
Tranquil Lake



Sunset Field



Sunset Ocean



Maroon Red



Poppy Field



Spring Tulips

Available in adult, medium and keepsake sizes.



Companion



Flying Doves



Bespoke
scatterpods

You can create a unique Scatterpod, which can be wrapped in any image of your choosing. Alternatively, if you don't have an image and have a theme in mind, we'll find you the perfect image.

To see our full range, please ask your funeral director for more information.

Memorial masonry

When the memorial masonry order for a loved one is entrusted to Lincolnshire Co-op, we take complete responsibility so that relatives have no more to worry about than is absolutely necessary. We offer a personal and professional service across Lincolnshire, North Nottinghamshire and surrounding areas, where we have served the bereaved for over 125 years.

As a member of Lincolnshire Co-op, you will also benefit from 2% dividend on our memorial charges excluding cemetery or churchyard fees.

We work with highly trained and qualified memorial masons who provide a full range of personalised memorials for your loved ones and can also renovate existing stones to ensure they remain as a fitting memorial to mark the final resting place.

Every person is different, and every memorial can be too. It should be a reflection of the individual, which is why we believe it's important that each of our clients feel that every detail and personal touch has been considered.

Our colleagues are trained to order memorials to your exact requirements, in line with local cemetery and churchyard regulations.



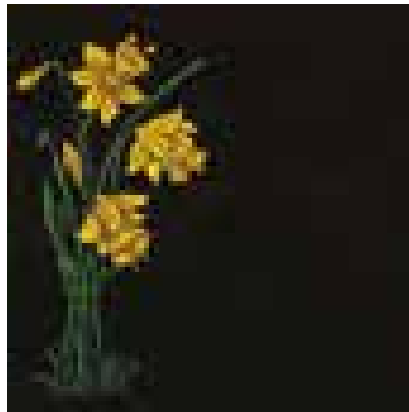
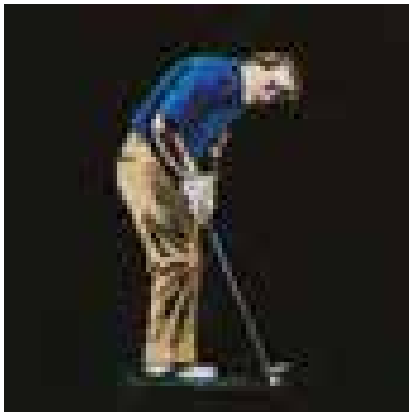
Important things to consider:

Regulations

There are many regulations which govern the size, design and type of memorials that can be fixed in churchyards and cemeteries. Many churchyards don't allow polished memorials with metallic paint or gold leaf lettering. Our colleagues will be able to advise you on the regulations for the appropriate burial ground.

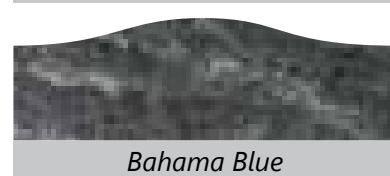
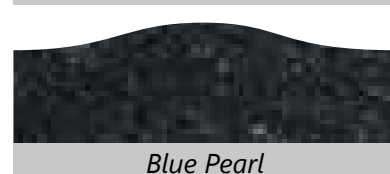
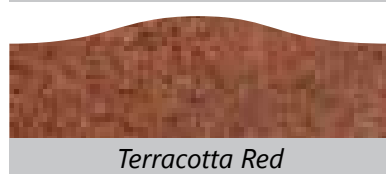
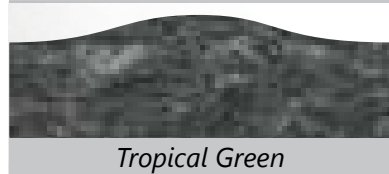
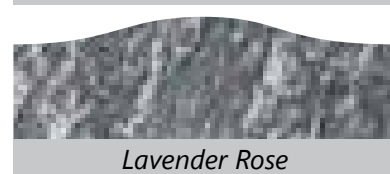
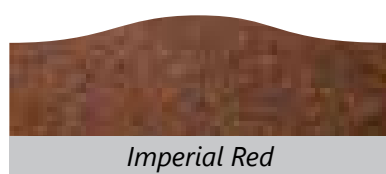
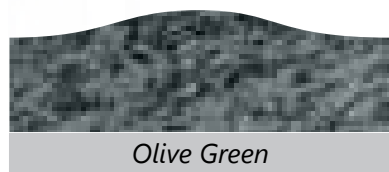
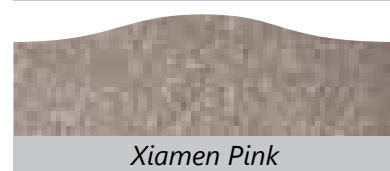
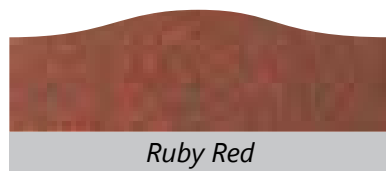
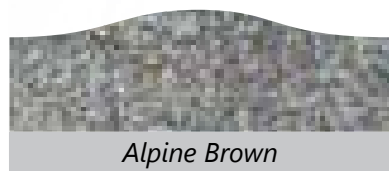
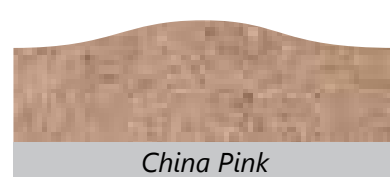
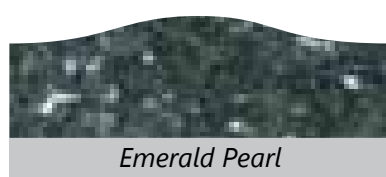
Shapes AND designs

Memorial shapes (depending on the regulations) can be chosen by you. You may also choose to personalise the memorial with artwork designs or photo plaques.

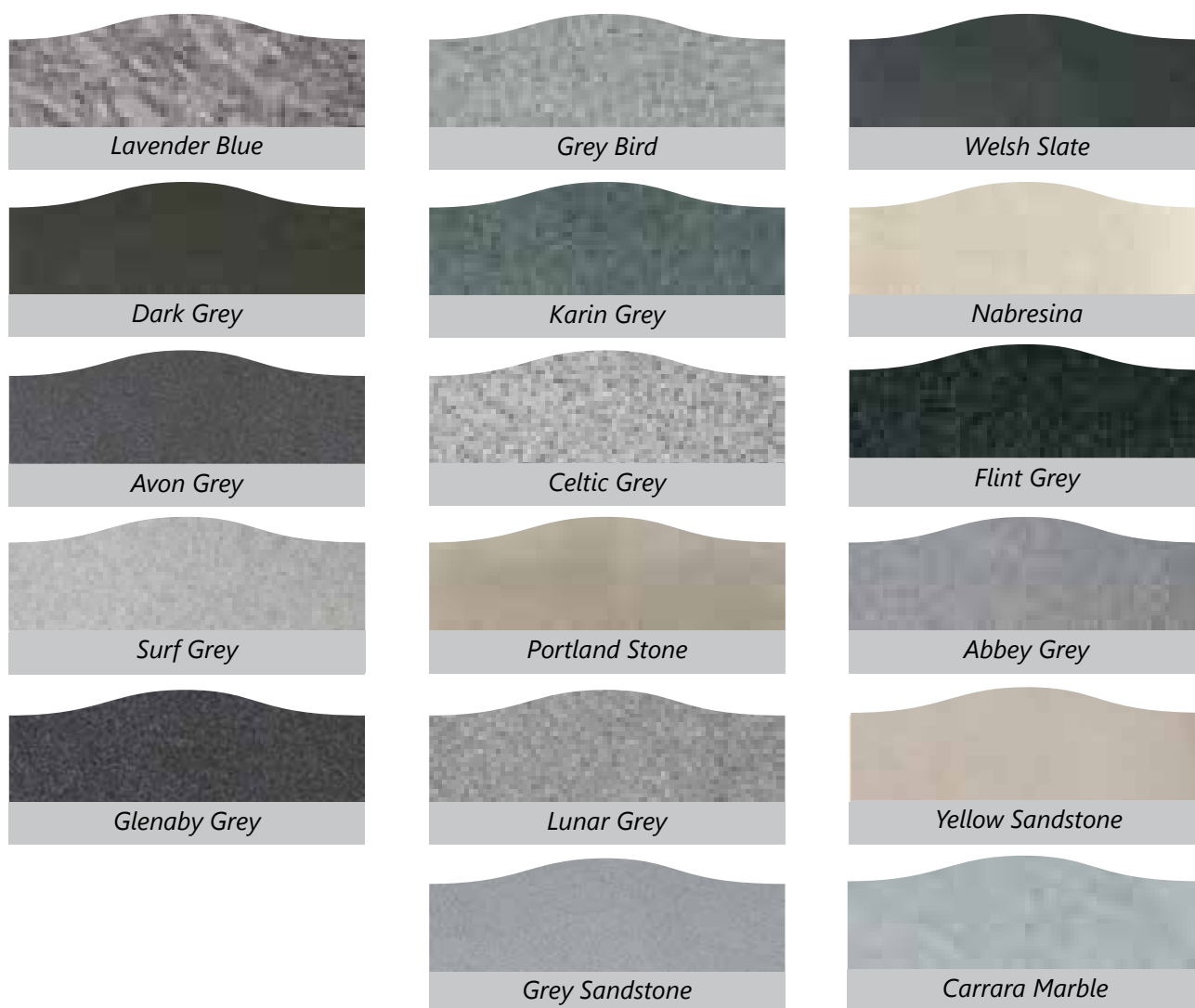


Materials

Our memorials are available in a range of different materials and colours. Please be aware that the colours displayed are purely for illustration purposes and being natural products, there may be some colour variations from one memorial to another which makes them unique.



Being natural products, colour will vary from memorial to memorial, making each one unique.



Being natural products, colour will vary from memorial to memorial, making each one unique.

Memorial finish

There are various types of finish available for your memorial as outlined below. Please consider that burial ground regulations may stipulate the type of finish permitted.

Polished:

All visible areas of the memorial are polished. The vast majority of cemeteries permit polished memorials to be fixed.

Honed:

A honed memorial is extremely smooth and has a non-reflective finish which is accepted in most churchyards. A honed finish can be described as an 'eggshell' finish.

Inscription wording

Choosing the right words for the memorial can be difficult but please see a typical inscription here. It may be that you would like a poem or quotation on your memorial too. However, please be aware that burial ground regulations may restrict the content and style of inscription. Our team will be able to advise you of the local regulations.

Lead A brief introduction	IN LOVING MEMORY OF
Name Lines Usually the largest font-size	STANLEY JONES
Date Lines Showing the dates of Birth, Death or Age	DECEMBER 1935 - FEBRUARY 2010
Personal Description Often describing the relationship of the departed	A LOVING HUSBAND, FATHER AND GRANDFATHER
Epitaph Words devoted to the departed	<i>To have known you Was a precious gift</i>

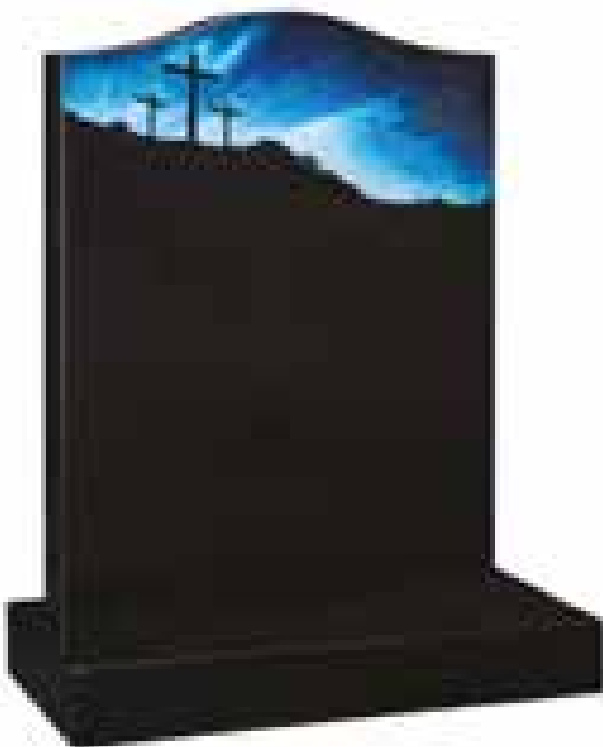
Lettering

When choosing the inscription, you may like to consider the font. Here are our top ten fonts used. Alternatively, if you would like a different style, our funeral colleagues will advise you.

We also have a range of lettering types from cut and paint in various colours, cut and gild as well as flush lead. Our funeral colleagues will guide you as to the most suitable lettering types for the memorial, in keeping with the regulations.



Cemetery memorials:



WG4

A traditional Ogee shaped headstone with a sandblast and painted crucifix scene. The night sky is inset with crystals.

Headstone 27"(h)x21"(w)x3"(d)

Base 3"(h)x24"(w)x12"(d)

Shown in Black Granite



WG15

The addition of moulded edges on the headstone and base create a classic looking headstone.

Headstone 27"(h)x21"(w)x3"(d)

Base 3"(h)x24"(w)x12"(d)

Shown in Xiamen Pink Granite



WG138

This sandblasted 'book, cord and tassel' design provides an ideal frame for two inscriptions.

Headstone 27"(h)x21"(w)x3"(d)

Base 3"(h)x24"(w)x12"(d)

Shown in Dark Grey Granite



WG21 Roses D105

The roses flank the central polished heart, an ideal space for adding a personal motif or design.

Headstone 30"(h)x24"(w)x4"(d)

Base 4"(h)x30"(w)x12"(d)



WG61

The tapered headstone and pitched edges create a memorial reminiscent of a traditional boulder.

Headstone 27"(h)x21"(w)x5"-3"(d)

Base 4"(h)x24"(w)x12"(d)

Shown in Celtic Grey Granite



WG39

This monochrome image of Jesus is one of many designs available.

Headstone 27"(h)x21"(w)x3"(d)

Base 3"(h)x24"(w)x12"(d)

Shown in Abbey Grey Granite



WG26

An ornate topped headstone. The pin line accentuates this classic shape and is further enhanced by the bow front base.

Headstone 27"(h)x21"(w)x3"(d)

Base 3"(h)x24"(w)x12"(d)

Shown in Glenaby Grey Granite

Books and hearts:



WG132

The addition of a bowed base adds a touch of grandeur to the classic book memorial.

Book 18"(h)x24"(w)x3"(d)

Rest 14"(h)x12"(w)x6"(d)

Base 3"(h)x27"(w)x15"(d)

Shown in Black Granite



WG130

A classic Cord and Tassel Book on a simple rectangular base.

Book 18"(h)x24"(w)x3"(d)

Rest 14"(h)x12"(w)x6"(d)

Base 3"(h)x27"(w)x15"(d)

Shown in Blue Pearl Granite



WG153

This double heart features a carved and highlighted lily.

Tablet 16"(h)x28"(w)x3"(d)

Rest 12"(h)x6"(w)x3"(d)

Base 3"(h)x30"(w)x15"(d)

Shown in Black Granite



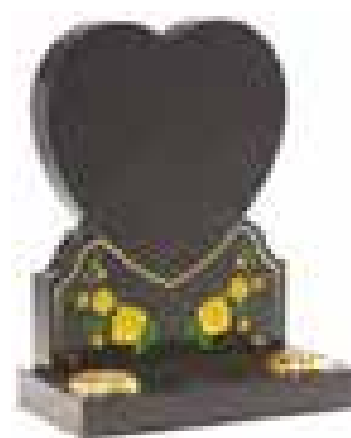
WG155

The deep carved roses can be painted or highlighted for a monotone finish.

Headstone 33"(h)x24"(w)x3"(d)

Base 3"(h)x30"(w)x12"(d)

Shown in Black Granite



WG156

Sandblasted and painted designs can be added to create a personalised memorial.

Headstone 27"(h)x21"(w)x3"(d)

Base 3"(h)x24"(w)x12"(d)

Shown in Black Granite

Kerb sets:

WG214

An Ogee shaped kerb memorial with polished rope effect mouldings around the headstone and kerbs.

Overall 32"(h)x30"(w)x33"(d)

Shown in Black Granite



WG100

A classic Ogee shaped headstone and kerb memorial. The corner posts can be bored for flower containers as illustrated.

Overall 30"(h)x30"(w)x78"(d)

Shown in Black Granite



WG108

The natural pitched edges of the headstone follow the contours of the cheek shoulders. The pitched edges are continued along the kerbs.

Overall 36"(h)x36"(w)x78"(d)

Shown in Alpine Brown Granite



WG102

Four kerbs and attractive peon top posts, there is room on the chamfer of the kerb for an inscription.

Overall 9"(h)x30"(w)x78"(d)

Shown in Black Granite



Churchyard memorials:



WG184
This beautiful headstone is carved with a cross & rose design.
Headstone 27"(h) x 21"(w) x 3"(d) Base 3"(h) x 24"(w) x 12"(d)
Shown in Nabresina



WG178
The splay shoulders on this headstone are outlined by a dark pin line and central cross.
Headstone 27"(h) x 21"(w) x 3"(d) Base 3"(h) x 24"(w) x 12"(d)
Shown in Abbey Grey Granite



WG181
A shallow Peon shaped headstone with stop moulded edges creates a simple but effective design.
Headstone 27"(h) x 21"(w) x 3"(d) Base 3"(h) x 24"(w) x 12"(d)
Shown in Grey Sandstone



WG176
This Ogee shaped headstone has been enhanced by check shoulders and a carved floral design.
Headstone 27"(h) x 21"(w) x 3"(d) Base 3"(h) x 24"(w) x 12"(d)
Shown in Karin Grey Granite

WG180
A pitched margin headstone is complemented by the matching base.
Headstone 27"(h) x 21"(w) x 3"(d) Base 3"(h) x 24"(w) x 12"(d)
Shown in Yellow Sandstone



Cremation memorials:



WG247

A sand blasted book design.

2"(h)x18"(w)x15"(d)

Shown in Lunar Grey Granite



WG245

Elegant painted rose with gold pin line.

2"(h)x18"(w)x12"(d)

Shown in Black Granite



WG241

A small Ogee shaped headstone and rectangular base.

Ogee 12"(h)x21"(w)x3"(d) Base 2"(h)
x23"(w)x9"(d)

Shown in Coral Green Granite



WG242

Classic Vase and Tablet design.

Tablet 12"(h)x16"(w)x2"(d)

Vase 4"(h)x6"(w)x6"(d)

Base 2"(h)x23"(w)x9"(d)

Shown in Black Granite



WG255

A classic Desk Tablet with moulded edges.

4"-2"(h)x18"(w)x18"(d)

Shown in Black Granite

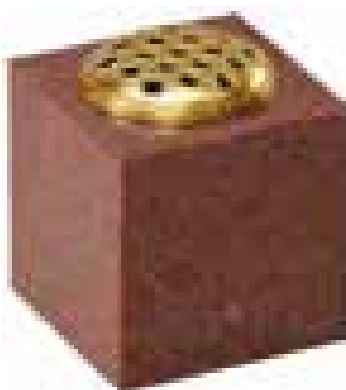
Vases:



WG271
Square vase
with check top
and base.
Vase 7"(h)x7"(w)
x7"(d) Base 2"(h)
x8"(w)x8"(d)
Shown in Lunar
Grey Granite



WG272
Square vase
with tapered
chamfered
edges.
Vase 8"(h)x8"(w)
x8"(d) Base 1"(h)
x10"(w)x10"(d)
Shown in Black
Granite



WG273
Square vase.
7"(h)x7"(w)x7"(d)
Shown in Ruby
Red Granite



WG270
A popular heart
shaped vase.
Vase 10"(h)x10"(w)
x7"(d) Base 1"(h)
x12"(w)x9"(d)
Shown in Black
Granite



WG276
Classic turned
globe vase.
12"(h)x6"(w)x6"(d)
Shown in Black
Granite



WG277
Square vase
with moulded
corners.
8"(h)x8"(w)x8"(d)
Shown in Dark
Grey Granite



WG278
Shadow punched
portrait on a vase.
6"(h)x12"(w)x6"(d)
Shown in Black
Granite

Eco-friendly memorials

Our remembrance benches, bird boxes and crosses can be placed in your loved one's favourite spot or even in your garden, giving you an opportunity to sit, reflect and remember. They can be personalised with an inscription and have been hand-made by Hill Holt Wood and by a local charity called The Pelican Trust. Please note that whilst the products are from high quality wood and are built to last, they will eventually deteriorate over a period of time due to weathering.



Outdoor memorials

We also work with Roll and Scroll, a local business in Grantham, to create personalised and meaningful metal memorial benches. Your unique bench can feature designs that reflect the interests and hobbies of a loved one or even the silhouette of someone special. Please speak to our team about your requirements and we can work with our local supplier to create a special tribute to your loved one.



In Memory Seeds

Six seed types
available in two card finishes

Forget-Me-Nots



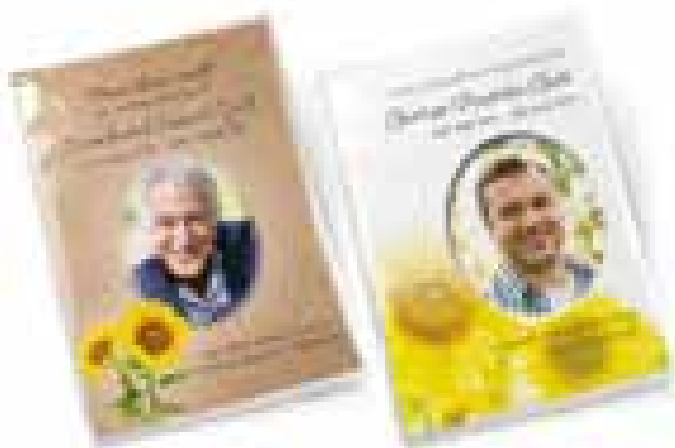
Kraft card and white card style with photo

Poppies



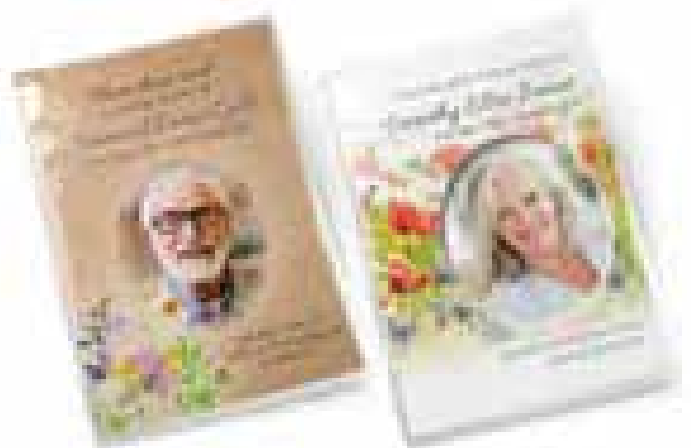
Kraft card and white card style with photo

Sunflowers



Kraft card and white card style with photo

Wildflowers



Kraft card and white card style with photo

Daisies



Kraft card and white card style with photo

Pansies



Kraft card and white card style with photo



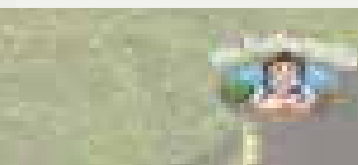
Grow a memory

These personalised funeral seed favours are the perfect sentimental touch to an important and emotional occasion. As the flowers grow, you are giving the gift of life back to the earth, as they are all desirable for insects to pollinate and are considered 'bee friendly'. Grow happy memories of your loved one; something that family and friends can share in.

All designs also available without a photo in both card finishes



Seeds are available in packs of 10



Keepsake Memory Pins

For centuries, symbols have been used to acknowledge support, connection and remembrance. Sometimes, these symbols are made into brooches and pins so that they can be attached to clothing and proudly displayed, becoming an ideal way of expressing support and symbolising togetherness in mourning.

The Royal British Legion's Remembrance Poppy is probably the most well-known pin badge in the UK, however the use of small pieces like these as symbols of remembrance dates back to the Victorian era.

Tokens of remembrance, such as black jet brooches or touchstones, were given out as keepsake items at funerals and were a popular way of commemorating a loved one's death. These items were worn for up to two years after the funeral, especially by the immediate family through the period of deep mourning.

With this in mind, we have developed a range of 'In Memory Pins' for families to gift to mourners at the funerals of their loved ones. Our twenty individual designs allow for a personal touch, making them a fitting tribute and encouraging unity and togetherness during difficult times.

Family and friends can either choose to wear their pins on the day of the funeral or for a longer period of mourning. Each pin is silver plated or enamelled, presented in its own voile drawstring pouch, and can be ordered at the same time as service stationery. A larger pouch will accompany the order for discreet distribution among the congregation.

Serving as a sentimental keepsake, going hand in hand with Orders of Service, it is important that the correct number of pins are purchased for mourners so that nobody is left disappointed.

We believe we have been able to reintroduce a fitting, heartfelt keepsake product that families will find comfort in sharing with mourners, and which will serve as a respectful memento to help everyone come together in grieving their loss.



An elegant memento for you,
your family, and your friends.

Each pin comes in an individual, elegant drawstring voile
pouch, with a minimum order of ten pins.



Silver Heart



Silver Dove



Angel Wings



Silver Ribbon



Red Rose



Eternity Sign



Forget-Me-Not



White Rose



White Butterfly



Treble Clef



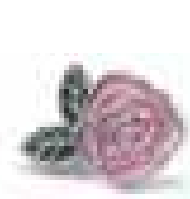
Teddy Bear



Cross



Silver Cat



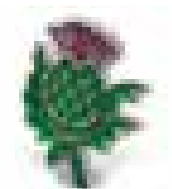
Pink Rose



Sport Boots



Red Robin



Thistle



Daffodil



Shamrock



Rainbow Heart

Pins are available in packs of 10

Memory bears

Our Memory Bears are handmade by a local Lincolnshire supplier, Sewing by Sue, using loved ones' clothing or sentimental material from a section of a wedding dress, a much loved shirt, baby grow or jacket. There are many combinations that can be incorporated to create a unique and precious Memory Bear. We have 3 sizes of Memory Bear available.





The Signature Bear (as illustrated) is the most popular bear, complete with movable arms and legs. They are 30cm tall when seated and 40cm when standing. It will incorporate a lot of detail from your items of clothing. To order one of these bears you would need at least 2 small or one 1 medium sized shirt (or similar).

The Mini Bear is 20cm when seated and 30cm when standing, with movable arms and legs. It will incorporate a small amount of detail from your clothing. It is ideal if you only have limited amount of clothing or would like an additional bear made from leftover fabric.

Please note, the fabric will need to be in a clean, reasonable state. Any clothing that is very worn may impact on the quality of the finished product.



Ashes into Glass®

Ashes into Glass® jewellery symbolises eternal love and togetherness. By wearing it or just holding it in your hand, you will connect with your loved one and share special moments together. Each item of jewellery tells a story that is deeply personal to you and will shine with its own character. It may remind you of a starry night sky, a wispy cloud up above, or maybe the ashes floating on a gentle breeze.

They create a one of a kind gemstone by layering the cremation ashes within 1100°C molten glass and coloured glass crystals. This unique stone is set into a beautifully crafted setting and will be a daily reminder and fitting tribute to the life of your loved one.

Classic Collection

The Classic Collection is designed with beauty and durability in mind, clean lines and a timeless style will carry the memory of your loved one for many years to come. The mounts are hand cast using one piece of precious metal with no weak joins or soldering, you can choose sterling silver, 9ct gold or 9ct white gold.

Ashes into Glass® jewellery carries their own makers mark "ASHES" which is your assurance of a genuine Ashes into Glass® piece.





Halo Collection

The Ashes into Glass® Halo Collection is finished with ethically sourced real diamonds set into the border. Reflections of light bring the ashes in the centre stone alive and remind you that the spirit of your loved one lives in your heart.



Fingerprint jewellery

We offer a range of fingerprint jewellery. Each piece is professionally made with care and attention down to each and every detail.



RF04.7M

Chain necklace 45 cm ARTICLE CODE 10GC210.45

Chain necklace 45 cm, suited for Atlantis Memorials jewellery. The necklace is equipped with a strong lobster claw clasp. The necklace has a thickness of 2.1 mm.



HF097



LFP01-185



AH064



HF109.170



RF03.6M



AH012



AH057



AH049.FP



AH053



AH048

39 South Street, **Alford**, LN13 9AJ
(01507) 463 444

5 South Square, **Boston**, PE21 6HX
(01205) 362 512

22 Grantham Road,
Bracebridge Heath, LN4 2LD
(01522) 529 406

36 High Street,
Coningsby, LN4 4RA
(01526) 345 999

North Street,
Gainsborough, DN21 2HS
(01427) 612 131

246 Corporation Rd,
Grimsby, DN31 2QB
(01472) 242 444

2-8 Church Street,
Holbeach, PE12 7LL
(01406) 422 333

2 Market Place,
Horncastle, LN9 5HD
(01507) 523 385

Tritton Road, **Lincoln**, LN6 7QY
(01522) 534 971

11 Proctors Road, **Lincoln**, LN2 4LA
(01522) 535 800

West Street,
Long Sutton, PE12 9BN
(01406) 363 648

134 Eastgate, **Louth**, LN11 9AA
(01507) 603 519

Clifton House, High Street,
Mablethorpe, LN12 1AU
(01507) 473 440

1 King Street,
Market Rasen, LN8 3BB
(01673) 842 788

Roseleigh House, Beacon Hill Road,
Newark, NG24 1NT
(01636) 703 808

18 Moorgate, **Retford**, DN22 6RH
(01777) 701 601

55/57 Oswald Road,
Scunthorpe, DN15 7PE
(01724) 890 000

Duke Street, **Sleaford**, NG34 7DX
(01529) 306 311

St. John's Road, **Spalding**, PE11 1JD
(01775) 723 199

15 The Terrace, **Spilsby**, PE23 5JR
(01790) 752 334

Trusthorpe Road,
Sutton on Sea, LN12 2LL
(01507) 441 271

www.lincolnshire.coop

(September 2023)

Printed on paper from sustainable sources